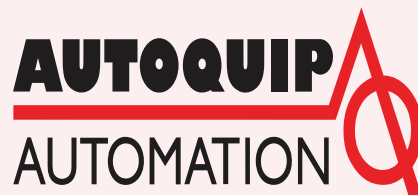


Pump Flow Control

#3076-PFC3-000

#3076-PFC4-000

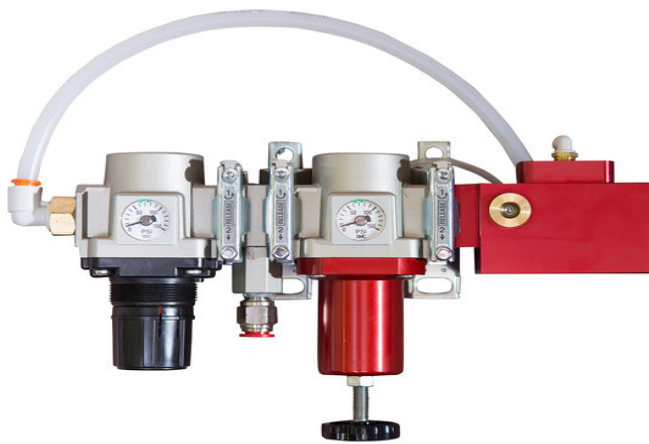


*Need a Solution to Premature Pump Wear or Paint Degradation?
Autoquip has the Answer!*

System Description

Autoquip (AQ) has a patented pneumatic pump control providing automatic pump pressure reduction when the circulation system back pressure is not required to spray. The new Pump Flow Control (PFC) technology feature provides energy savings, reduced coating degradation, and pump wear, which can occur every time the coating is being circulated and not sprayed. This PFC can be integrated into an engineered system that can be used for most coatings used for manual hand guns and automatic gun applications. The AQ Pump Flow Control can regulate both air pressure and flow to pneumatically driven pumps. This device can also be used to eliminate problems associated with transferring energy to run away pumps utilizing pressurized air, and pressure controlled regulators.

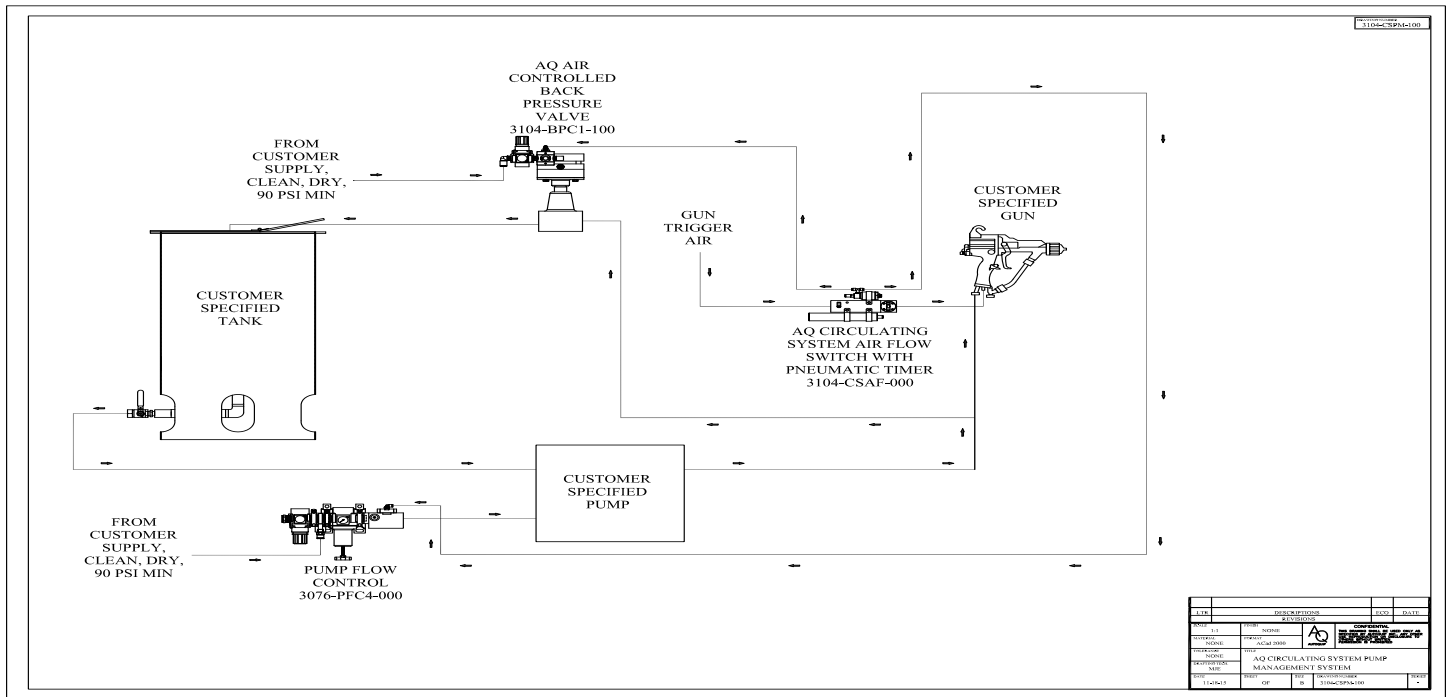
Until this technology was proven the speed control and/or non-production mode function was not available for pneumatic pumps. With the availability of Autoquip's PFC for pneumatic pumps, the customer will realize cost savings in air consumption, along with longer lasting pump seals. Additionally it will keep coatings in suspension, but will not shear the paint as it normally would when utilizing a typical back pressure regulator (BPR) in the circulation system.



Standard Features

- Systematically controls both air pressure and material flow rate.
- Controls static delivery pressure and flow rate dynamically.
- Independent adjustment of static pressure and dynamic flow.
- Reduces pneumatic problems caused by run-away pumps.
- Regulates pneumatic pump material flow.

Typical Manual Installation



Equipment Required for *Manual* Gun Installation:

- 1 - Air Flow Switch (AFS) controlled by manual gun trigger
- 1 - Pump Flow Control activated by AFS
- 1 - Back Pressure Regulator modified with AQ solenoid kit

Equipment Required for *Automatic* Robotic System:

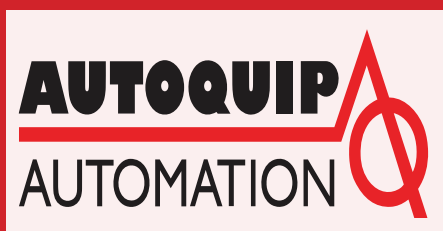
- 1 - Pump Flow Control (PFC) activated by the same pneumatic or electric signal for color change stacks*
 - 1 - Back Pressure Regulator modified with AQ solenoid kit
- *Note - may require extra solenoid to activate PFC

Ordering Info

- 3104-BPC1-100 used with Graco BPR PN - 916154 or 208997
- 3104-BPC1-200 used with Graco BPR PN - 236770 or 237503
- 3104-BPC1-300 used with Binks BPR

PFC Optional System Configuration

- 3104-CSPM-000 Manual System
- 3104-CSAF-000 AQ Circulating System Air Flow Switch with Pneumatic Timer



www.aqautomation.com

N57W13430 Reichert Avenue
 Menomonee Falls, WI 53051
 Tel. 262-781-6133 Fax 262-781-6188
sales@aqautomation.com