

# AQ Tank Part Number Options

A				B		C		D		E		F		G		H		I	
1	1	0	1	0	1	0	0	1											

**Description Example:**  
**MT 3404-1101-01-001**

Mix Tank: 5 gallon mix tank, Lid Type: Flat 5-20 gallon, Level Sensor: None, Polished: 5-20 gallon Electro Polish, Ball Valve: None, Agitator Motor: Pneumatic, Pump Bracket: None, Sight Gauge: None, Pour Lip: 5-20 gallon

## Tanks

### Mix Tank Size Options "A"

- 1 = 5 gallon tank
- 2 = 10 gallon tank
- 3 = 15 gallon tank
- 4 = 20 gallon tank
- 5 = 30 gallon tank
- 6 = 60 gallon tank
- 7 = 80 gallon tank

### Lid Type "B"

- 1 = Flat 5-20 gallon
- 2 = Flat 30-80 gallon
- 3 = Dome 5-20 gallon\*
- 4 = Dome 30-80 gallon\*

### Intrinsic Level Sensor "C"

- 0 = None
- 1 = Level sensor only w/ zehner and 25' cable
- 2 = Level sensor w/ controller

### Polish "D"

- 0 = Non electro Polish
- 1 = 5-20 gallon Electro Polish
- 2 = 30-80 gallon Electro Polish

\*NOTE: Dome topped vessels are not constructed or tested under ASME BPVC Section VIII Division 1,2 or 3 rules. Please operate below 15 PSI (100 kPa) at all times. (A 10 PSI blow off valve is standard for dome tanks. Removal of blow off valve is not recommended).

## Options

### Option 1: 304 SS Ball Valves for Bottom Outlet "E"

- 0 = None
- 1 = 1/2" NPT
- 2 = 3/4" NPT
- 3 = 1" NPT - 2" NPT

### Option 2\*: Agitator "F"

- 0 = None
- 1 = Pneumatic
- 2 = Pneumatic w/ air flow control
- 3 = Electric

### Option 3: Pump Bracket "G"

- 0 = None
- 1 = Yes

### Option 4: Sight Gauge "H"

- 0 = None
- 1 = Yes

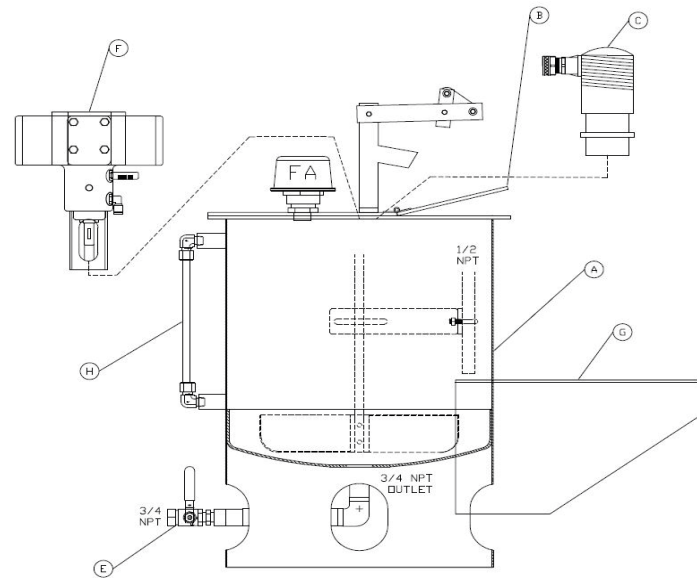
### Option 5: Pour Lip "I"

- 0 = None
- 1 = 5-20 gallon
- 2 = 30 gallon

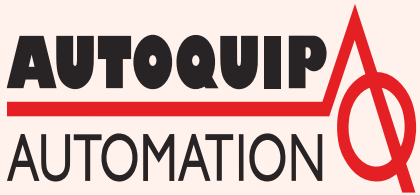
## Energy Efficient Accessories for Tanks

Air flow control #3076-AFC3-000  
 Pump flow control #3076-PFC3-000  
 Air motor #3077-AM20-000

Ask your sales representative for other Autoquip energy efficient products.



[www.aqautomation.com](http://www.aqautomation.com)



N57W13430 Reichert Avenue  
 Menomonee Falls, WI 53051  
 Tel. 262-781-6133 Fax 262-781-6188  
[sales@aqautomation.com](mailto:sales@aqautomation.com)