

55 Gallon Back Geared Agitators

3092-XXXX-X0X

Gear Ratio:

1 = 1:1

2 = 2:2

3 = 3:3

Air Engine Size:

3 = ECO-3M Air Engine

7 = ECO-7M Air Engine

BGAG = Back Gear and Lift

BGAL = Back Gear and Lid

BGLS = Back Gear, Lift and Lid



3092-BGLS-301

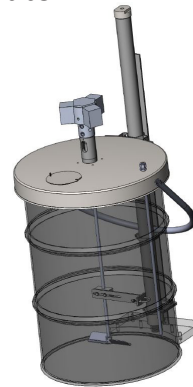
55 Gallon 1:1 Back Geared Agitator with
Elevator and Drum Lid

55 Gallon Drum Systems

3077-55LD-301	HAE3 Agitator and Drum Lid
3077-55LD-701	HAE7 Agitator and Drum Lid
3099-55EL-002	55 Gal Elevator and Lid - No Agitator
3099-55EL-300	HAE3 55 Gal Direct Drive Agitator, Elevator, and Lid
3099-55EL-301	HAE3 55 Gal Direct Drive Agitator and Elevator
3099-55EL-700	HAE7 55 Gal Direct Drive Agitator, Elevator, and Lid
3099-55EL-701	HAE7 55 Gal Direct Drive Agitator and Elevator



3099-55EL-002 - 55 Gallon Elevator
with Drum Lid only



3099-55EL-300 - 55 Gallon Direct Drive
Agitator with Elevator and Drum Lid

Simple and Flexible 55 Gallon Drum Lift System

- Smooth, strong lifting cylinder
- Full drum width mixing blades
- Twin mixing blades to thoroughly mix finishing materials
- Center siphon option for material transfer
- Stainless drum cover
- Lift guide maintains lid orientation

AUTOQUIP 3077/3092/3099

Ergonomic 55 Gallon Elevator System

Standard Features

- Simple clean mechanical design
- Ultra-low air consumption
- Elevator lift reduces ergonomic issues
- Large center feed blending blade and slow speed reduces process issues

Technical Specifications

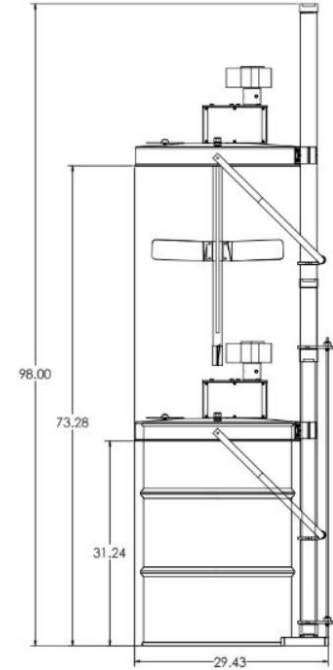
Maximum Air Inlet Pressure: 100 psi

Air Inlet Connection: 3/8" NPT (f)

Maximum Weight Capacity: 250 lbs. @60 psi, 400 lbs. @100 psi

Designed for use with customer supplied air quick disconnect so the unit cannot be raised unless the rotation has been deactivated.

See individual product flyers for specifications



Width of unit approximately 27.5

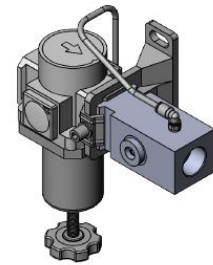
Options

3077-HAE3-000 ECO-3M Piston Air Engine™

3077-HAE7-000 ECO-7M Piston Air Engine™

3114-CLR3-000 Standard 3/8" Inlet/Outlet Port Closed Loop RPM Control

3114-CLR4-000 Optional 1/2" Inlet/Outlet Port Closed Loop RPM Control



Closed Loop RPM Control

Retrofit Back Geared Agitator with Existing Elevator & Lids

Back Geared Agitator for ECO-3M Piston Air Engine™

3092-BGAG-301 (1:1 Ratio)

3092-BGAG-302 (2:1 Ratio)

3092-BGAG-303 (3:1 Ratio)

Back Geared Agitator for ECO-7M Piston Air Engine™

3092-BGAG-701 (1:1 Ratio)

3092-BGAG-702 (2:1 Ratio)

3092-BGAG-703 (3:1 Ratio)

*Please contact your local Autoquip Distributor (www.aqautomation.com/where-to-buy) or AQ sales representative at 262-781-6133 for more information.

www.aqautomation.com

N57W13430 Reichert Avenue
Menomonee Falls, WI 53051
Ph: 262-781-6133 • Fx 262-781-6188
sales@aqautomation.com

AUTOQUIP
AUTOMATION

