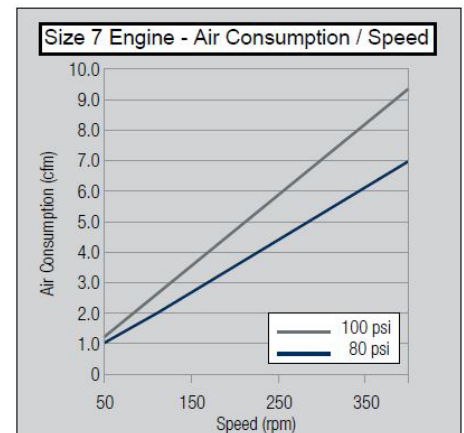
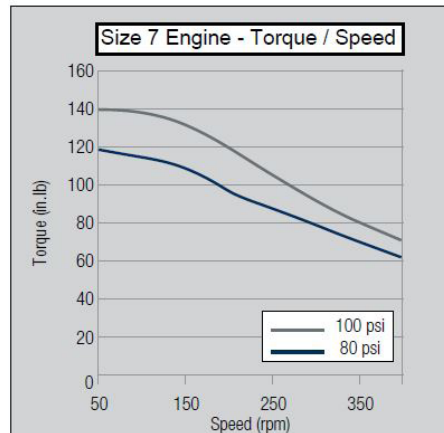
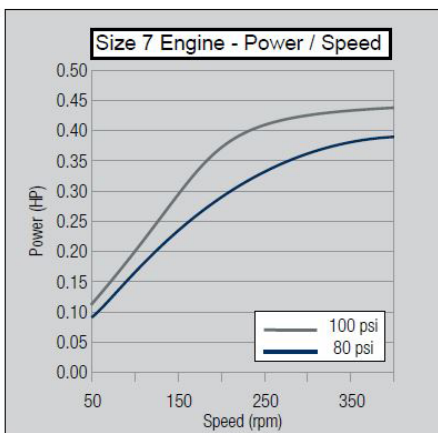
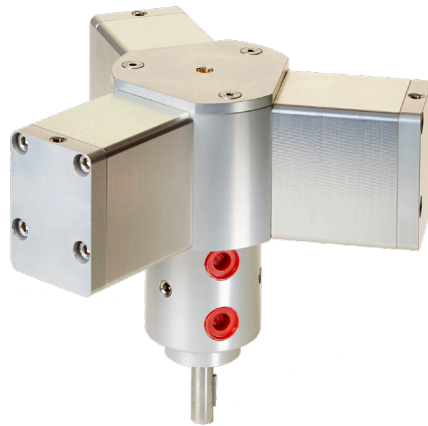


*Compressed air costing too much?  
The Autoquip ECO-7M reduces air motor consumption up to 15 times  
more than other brands*

- The #7 air engine has been developed for heavy duty stirring applications
- Incorporates a highly efficient piston design that consumes less air
- Smoother and quieter operation
- Lube free design eliminates the need for oilers
- Durable cam design provides long life
- Closed loop RPM control available (see options on reverse side)
- Quick and easy servicing



# AUTOQUIP 3077-HAE7-000

## ECO-7M Piston Air Engine™

### ECO-7 Technical Specifications

#### Environmental / Physical

Temperature Range:	14°F to 176°F (-10°C to 80°C)
Height:	8.110"
Diameter:	9.606"
Shaft Diameter :	0.5" (12.7 mm)
Weight:	10 lb (4.5 kg)

#### Pneumatic Connection Air Input:

1/4" BSPP/UNI

### Mechanical

Speed Range: 100 - 400 rpm

#### Maximum Input Pressure:

100 psi

#### Torque Output:

Torque at 100 rpm / 6.9 bar (100 psi) :139 in.lb (15.7 Nm)

Torque at 400 rpm / 6.9 bar (100 psi) :69 in.lb (7.8 Nm)

#### Max air consumption:

800 rpm / 6.9 bar: 7.0 ft<sup>3</sup>/min (11.9 m<sup>3</sup>/h)

### Ordering Info

3077-HAE7-000

Size 7 Air Engine



### Agitator Assemblies

- 3077-2B55-700 fits 55 Gal Lid w/2" Bung
- 3077-AE55-700 fits 55 Gal Lid
- 3077-BK55-700 fits Binks 55 Gal Open Drum
- 3077-IB55-700 fits 55 Gal In-Barrel
- 3077-AQ60-700 fits AQ60 Gal Mix Tank
- 3077-AQ80-700 fits AQ80 Gal Mix Tank

### Accessories

- 3077-RKT7-000 Size 7 Rebuild Kit
- 3077-INST-000 Size 7 Installation Kit
- 3077-BSA7-000 Size 7 Body Sub-Assembly Kit
- 3114-CLR4-000 1/2" Closed Loop RPM Control



Autoquip has a complete line of different sized air engines to match your speed and torque application requirements. (See website for other sizes)

[www.aqautomation.com](http://www.aqautomation.com)

N57W13430 Reichert Avenue  
Menomonee Falls, WI 53051  
Ph: 262-781-6133 • Fx 262-781-6188  
sales@aqautomation.com

**AUTOQUIP**  
**AUTOMATION**

