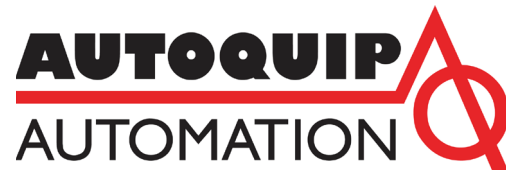


# INSTRUCTIONS – PARTS LIST

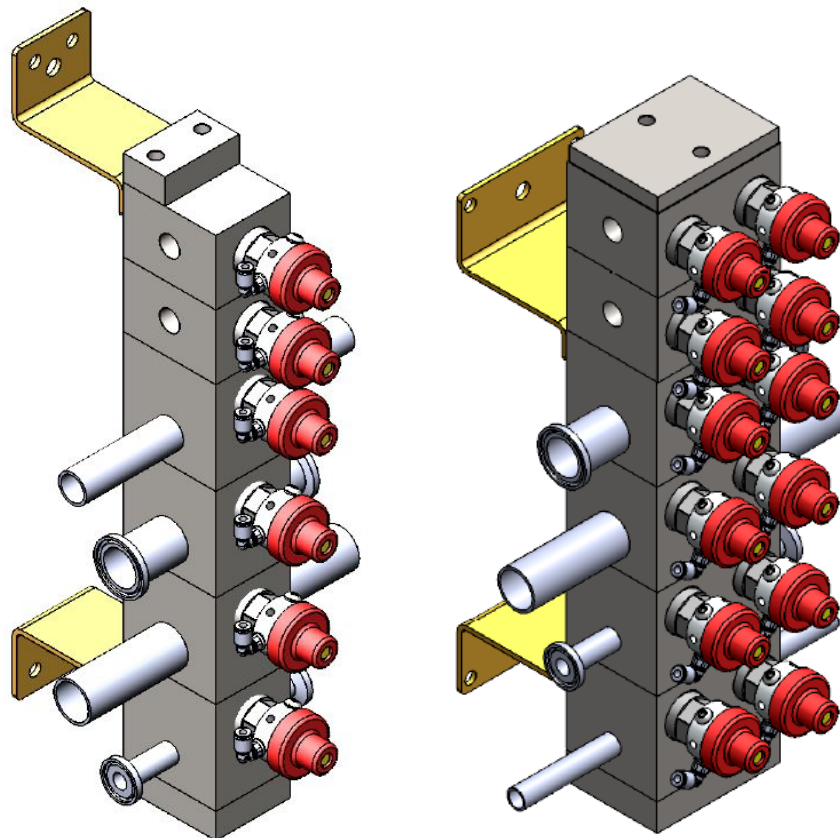
## INSTRUCTIONS!

This manual contains important warnings and information.  
**READ AND KEEP FOR REFERENCE.**



## Piggable/High Flow Color Changers

*For Use with AQ Color Valves (3066-41-00A)*



---

**AUTOQUIP, INC.**

**N57 W13430 REICHERT AVENUE, MENOMONEE FALLS, WI 53051**

©COPYRIGHT 2004, AUTOQUIP, INC.

# Table of Contents

Warnings.....	2,3	Poppet Valve Parts.....	11
Operation of Typical Systems.....	4,5	Accessories.....	12
Installation/Dimensions.....	6,7	Technical Data.....	13
AQ Piggable Color Valve.....	8	Warranty.....	14
Valve Stack Parts.....	9,10		

## Symbols

### Warning Symbol



This symbol alerts you to the possibility of serious injury or death if you do not follow the instructions.

### Caution Symbol



This symbol alerts you to the possibility of damage to or destruction of equipment if you do not follow the instructions.

### **WARNING**

#### **EQUIPMENT MISUSE HAZARD**

Equipment misuse can cause the equipment to rupture or malfunction and result in serious injury.

- This equipment is for professional use only.
- Read all instruction manuals, tags, and labels before operating the equipment.
- Use the equipment only for its intended purpose. If you are not sure, call your Autoquip distributor.
- Do not alter or modify this equipment. Use only genuine Autoquip parts.
- Check equipment daily. Repair or replace worn or damaged parts immediately.
- Use fluids and solvents that are compatible with the equipment wetted parts. Refer to the **Technical Data** section of all equipment manuals. Read the fluid and solvent manufacturer's warnings.
- Always wear protective eyewear, gloves, clothing, and respirator as recommended by the fluid and solvent manufacturer.
- Comply with all applicable local, state, and national fire, electrical, and safety regulations.

## **WARNING**

### **FIRE AND EXPLOSION HAZARD**

Improper grounding, poor ventilation, open flames, or sparks can cause a hazardous condition and result in a fire or explosion and serious injury.

- Ground the equipment and the object being sprayed. Refer to **Grounding** on page 5.
- If there is any static sparking or you feel an electric shock while using the equipment, **stop spraying immediately**. Do not use the equipment until you identify and correct the problem.
- Do not use 1,1,1-trichloroethane, methylene chloride, other Halogenated hydrocarbon solvents, or fluids containing such solvents in aluminum components. Such use could result in a serious chemical reaction, with the possibility of explosion.
- Do not use kerosene or other flammable solvents or combustible gases to flush the unit.
- Provide fresh ventilation to avoid the buildup of flammable fumes from solvents or the fluid being sprayed.
- Keep the spray area free of debris, including solvent, rags, and gasoline.
- Before operating this equipment, electrically disconnect all equipment in the spray area.
- Before operating this equipment, extinguish all open flames or pilot lights in the spray area.
- Do not smoke in the spray area.
- Do not turn on or off any light switch in the spray area while spraying or while there any fumes in the air.
- Do not operate a gasoline engine in the spray area.

### **MOVING PARTS HAZARD**

Moving parts can pinch or amputate your fingers or other body parts and can cause splashing in the eyes or on the skin.

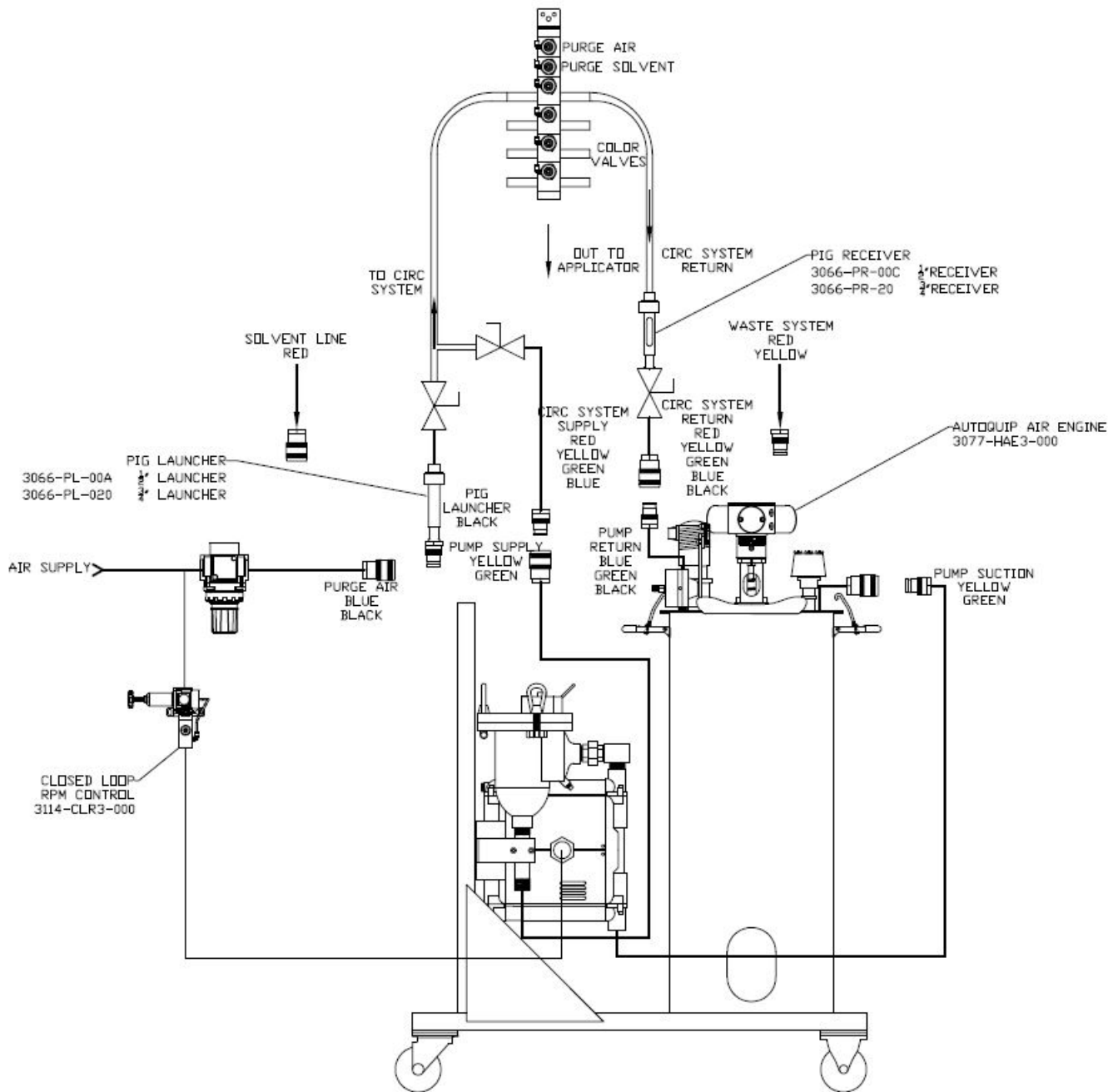
- Keep clear of all moving parts.

### **HAZARDOUS VAPORS**

Hazardous fluids or toxic fumes from solvents or other chemicals can cause serious injury or death if splashed in the eyes or on the skin, swallowed, or inhaled. When handling hazardous materials, proper eye and skin protection should be worn.

United States Government safety standards have been adopted under the Occupational Safety and Health Act. You should consult these standards – particularly the General Standards, Part 1910, and the Construction Standards, Part 1926.

# Typical System



# Operation of Typical System

## **RUNNING PAINT IN THE PIGGABLE SYSTEM**

### Filling the Piggable System (Yellow)

1. Connect all yellow connections
2. Turn pump on until color reaches waste hose
3. Turn off return ball valve

### Circulating the Piggable System (Green)

1. Connect all green connections
2. Turn on return ball valve
3. Turn on pump and BPR

## **FLUSHING THE PIGGABLE SYSTEM**

### Air Push the Piggable Stack System (Blue)

1. Connect all blue connections
2. Turn pump off
3. Max BPR 3 mins

### Pig the Piggable System (Black)

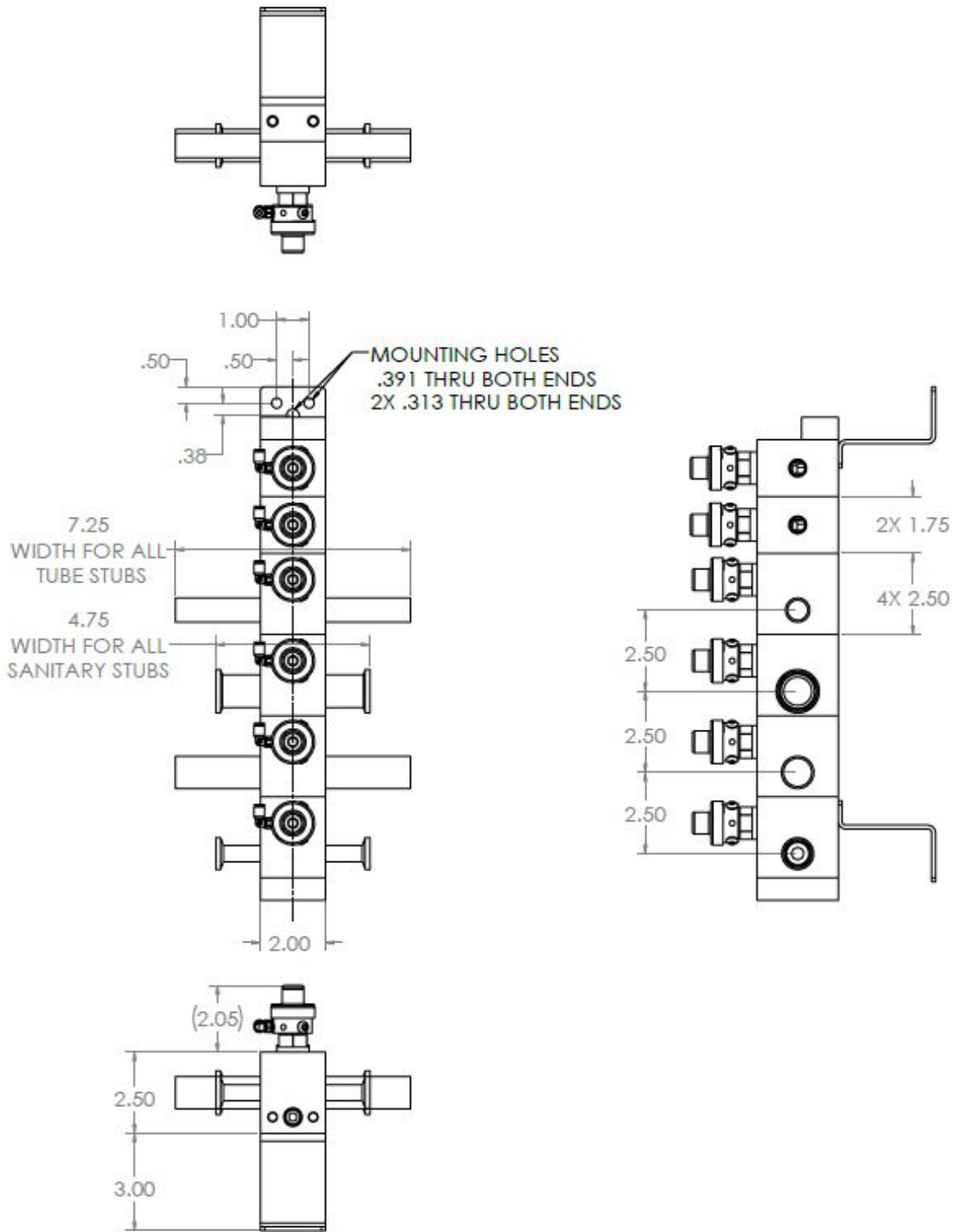
1. Insert pig in pig launcher
2. Connect all black connections
3. Open all pig valves until pig exits system

### Solvent Flush the Piggable System (Red)

1. Connect all red connections
2. Open supply and return valves
3. Wait for clear solvent

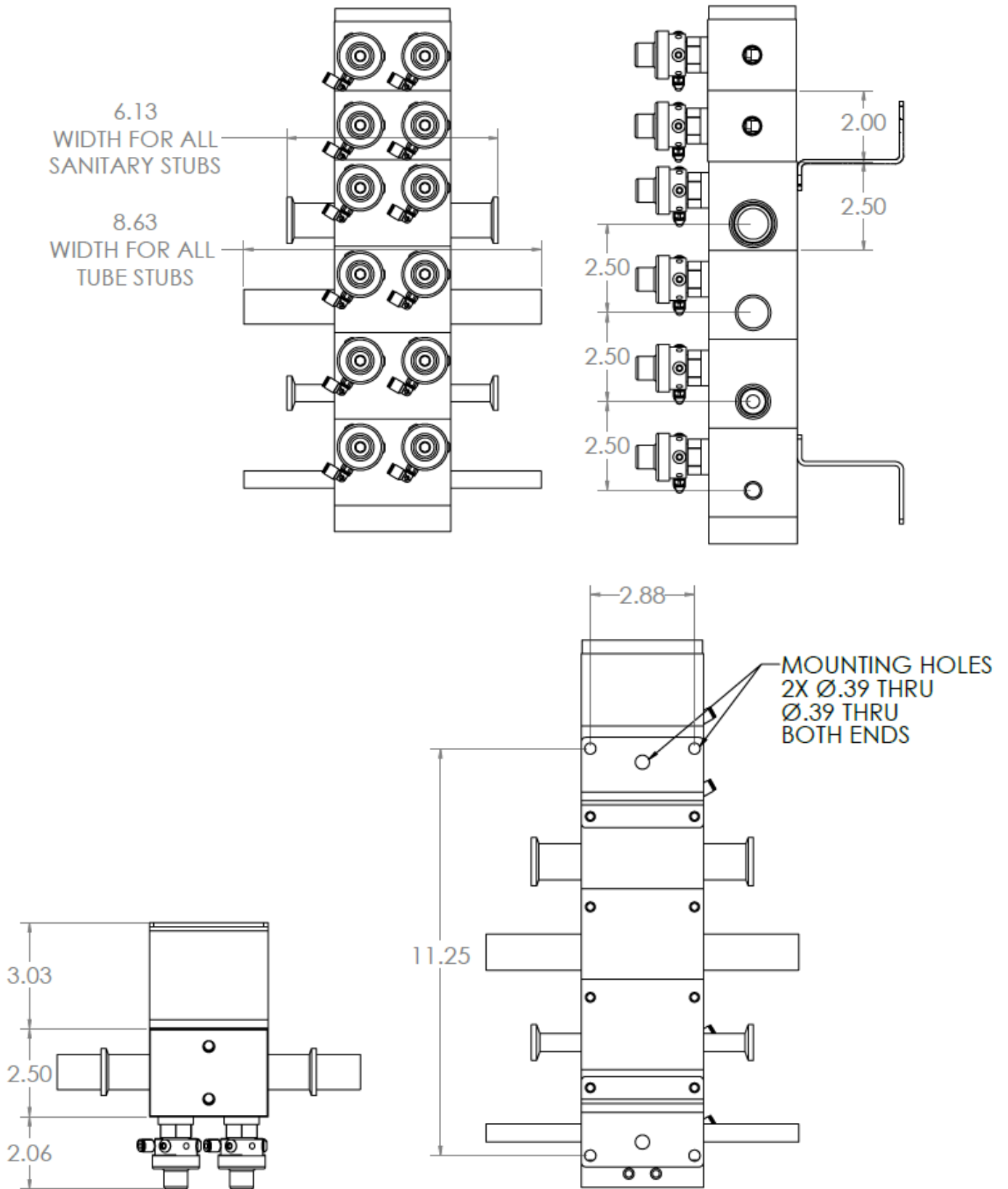
# Installation/Dimensions

## *Single Piggable Stack*



# Installation/Dimensions

## *Double Piggable Stack*



# AQ Piggable Color Valve

CV 3096 -

A	B	C	D	E	F	G	H
1	3	2	2	4	3	2	0

## **Description Example:**

### **CV 3096-1322-4-320**

Color Valve Block Type: Single Piggable

Inlet Size: 3/4"

Wall Thickness: 0.065"

Connection Type: Tube Stub

Number of Color Valves: 4

Flush Blocks: Solvent and Air

Outlet Size: 3/8" NPT Mounting

Bracket: None

## **"A" Color Valve Block Type**

**1 = Single Piggable (Single Path)**

**2 = Double Piggable (Dual Path)**

## **"B" Inlet Size**

**1 = 1/2"**

**2 = 5/8"**

**3 = 3/4"**

**4 = 1"**

## **"C" Wall Thickness**

**1 = 0.049"**

**2 = 0.065"**

## **"D" Connection Type**

**1 = Sanitary**

**2 = Tube Stub**

## **"E" Number of Colors**

**XX = Enter Number of Colors**

## **"F" Flush Blocks**

**0 = No**

**1 = Solvent Only**

**2 = Air Only**

**3 = Solvent and Air**

## **"G" Outlet Size**

**1 = 1/4" NPT (f)**

**2 = 3/8" NPT (f)**

## **"H" Mounting Bracket(s)**

**0 = None**

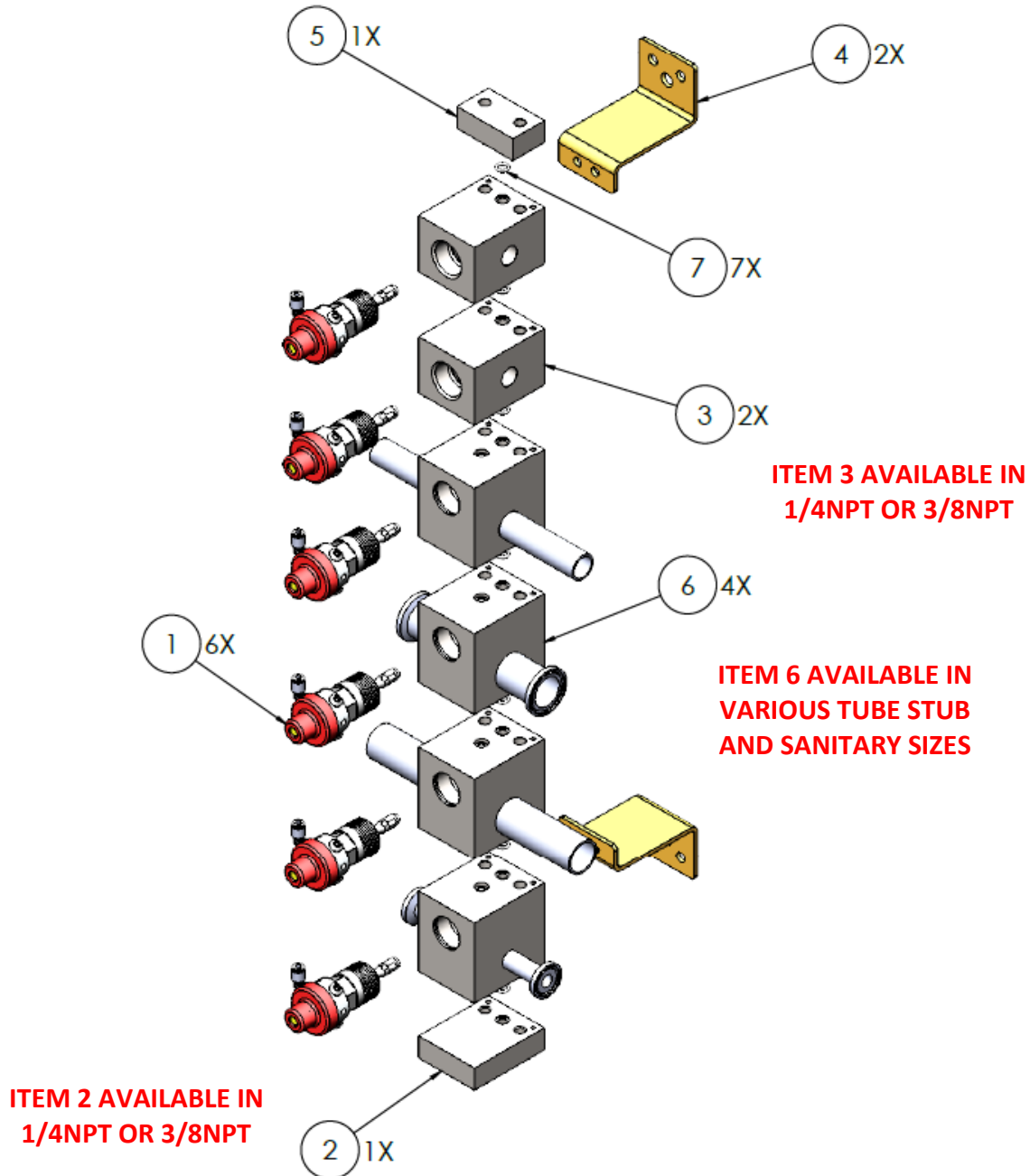
**1 = 1**

**2 = 2**



# Valve Stack Parts

## Single Valve Piggable Stack



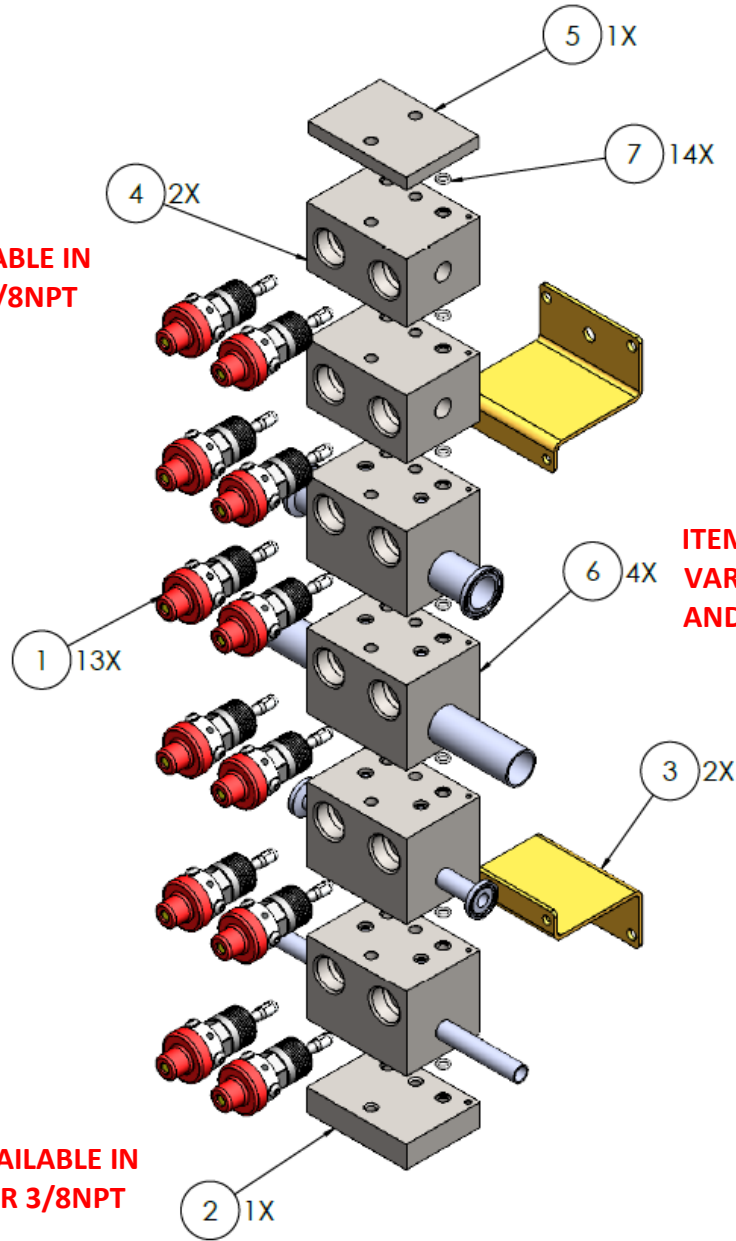
ITEM #	PART NUMBER	DESCRIPTION	QTY.
1	3066-41-00A	AQ POPPET VALVE	6
2*	3096-XXXX-XXX	AQ PIGGABLE COLOR CHANGER SINGLE VALVE BOTTOM PLATE, VARIOUS SIZES	1
3*	3096-XXXX-XXX	AQ PIGGABLE COLOR CHANGER SINGLE VALVE FLUSH BLOCK, VARIOUS SIZES	2
4	3096-SPMB-01A	AQ PIGGABLE COLOR CHANGER MOUNTING BRACKET	2
5	3096-TPPL-SP1	AQ PIGGABLE COLOR CHANGER SINGLE VALVE TOP PLATE	1
6*	3096-XXXX-XXX	AQ PIGGABLE COLOR CHANGER SINGLE VALVE BLOCK, VARIOUS STYLES	4
7	3100-TO-010	O-RING PTFE -010	7

\*Various color stack blocks and part styles shown for illustration purposes only.  
Contact your Authorized Autoquip distributor for a detailed list of color block styles available.

# Valve Stack Parts

## Double Valve Piggable Stack

ITEM 4 AVAILABLE IN  
1/4NPT OR 3/8NPT



ITEM 6 AVAILABLE IN  
VARIOUS TUBE STUB  
AND SANITARY SIZES

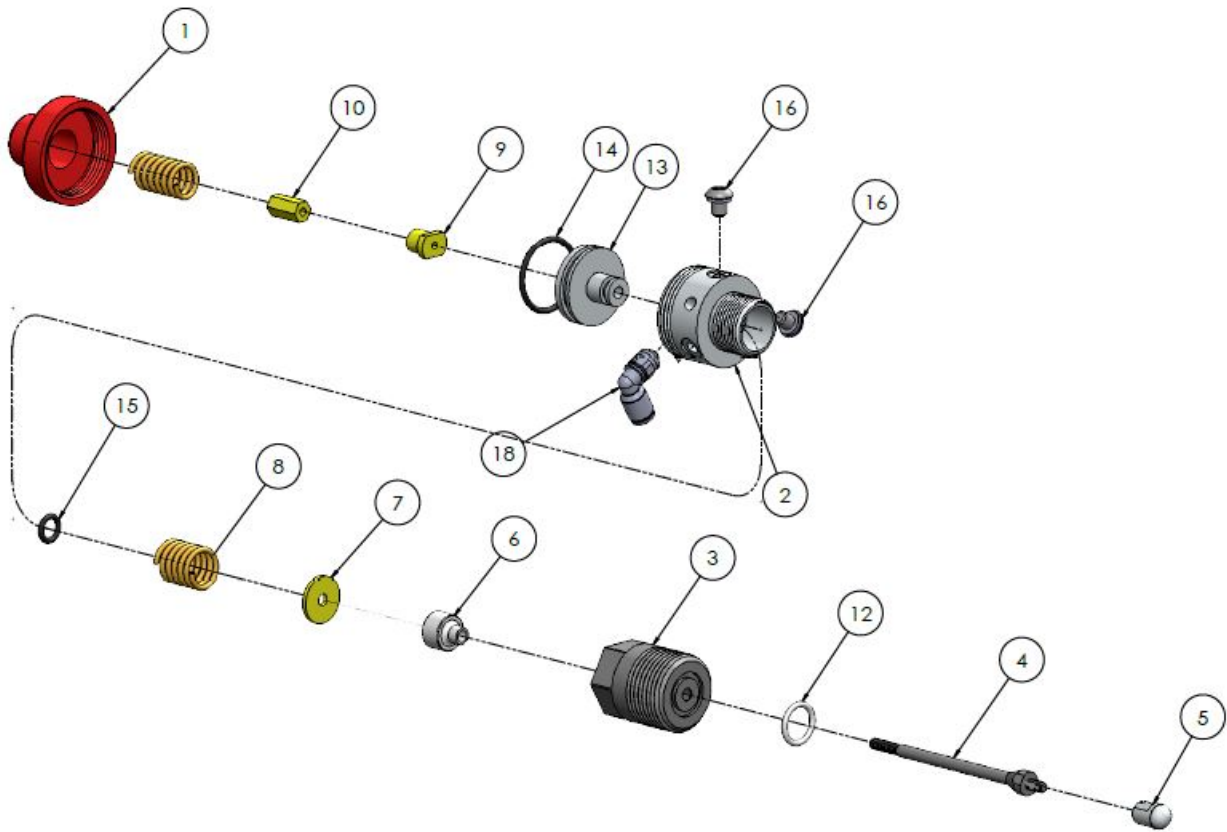
ITEM 2 AVAILABLE IN  
1/4NPT OR 3/8NPT

ITEM #	PART NUMBER	DESCRIPTION	QTY.
1	3066-41-00A	AQ POPPET VALVE	12
2*	3096-XXXX-XXX	AQ PIGGABLE COLOR CHANGER DOUBLE VALVE BOTTOM BLOCK, VARIOUS STYLES	1
3*	3096-DPMB-01	AQ DOUBLE PIGGABLE COLOR VALVE MOUNTING BRACKET	2
4	3096-XXXX-XXX	AQ PIGGABLE COLOR CHANGER DOUBLE VALVE FLUSH BLOCK, VARIOUS STYLES	2
5	3096-TPPL-DP1	AQ PIGGABLE COLOR CHANGER DOUBLE VALVE TOP PLATE	1
6*	3096-XXX-XXX	AQ PIGGABLE COLOR CHANGER DOUBLE VALVE BLOCK, VARIOUS STYLES	1
7	3100-TO-010	O-RING PTFE -010	14

\*Various color stack block and part styles shown for illustration purposes only.  
Contact your Authorized Autoquip distributor for a detailed list of color block styles available.

# Poppet Valve Parts

(3066-41-00A)



## PART NO. QTY DESCRIPTION

- 1. 3066-41-01A 1 CAP
- 2. 3066-41-02A 1 PISTON BODY
- 3. 3066-41-03A 1 VALVE BODY
- +4. 3066-41-04A 1 VALVE SHAFT
- \*5. 3066-41-05A 1 PLUNGER END (W/ *Loctite*® 271 TO FASTEN)
- \*6. 3066-41-06A 1 PACKING
- +7. 3066-41-07A 1 PACKING WASHER
- 8. 3066-41-08A 1 PACKING SPRING
- 9. 3066-41-09A 1 PISTON RETAINING NUT
- 10. 3066-41-10A 1 LOCKING NUT INDICATOR
- 11. 3066-41-11A 1 PISTON SPRING
- +\*12. 3066-41-12A 1 SEAL O-RING (TEFLON)
- +13. 3066-41-13A 1 PISTON
- \*14. 3066-41-14A 1 TOP PISTON O-RING (BUNA-N)
- \*15. 3066-41-15A 1 BOTTOM PISTON O-RING (BUNA-N)
- \*16. 3066-41-16A 2 PLUG
- 17. 3066-41-17A 1 FITTING 5/32"

\*INCLUDED IN REPAIR KIT #3066-50-00A

+WHEN REBUILDING VALVE, LUBRICATE WITH PETROLEUM JELLY

# Accessories

<b>Part #</b>	<b>Description</b>
3066-MB-001	Single Valve Stack Mounting Bracket <i>(2 per package, 2 required to hang 1 valve stack – mounts to Unistrut)</i>
3066-MB-002	Double Valve Stack Mounting Bracket <i>(2 per package, 2 required to hang 1 valve stack – mounts to Unistrut)</i>

# Technical Data

Fluid outlet size: 1/4" NPT - 3/8"NPT

Fluid Inlet Size: 1/2" O. D. - 1" O.D.

Wetted Parts:

304 & 316 stainless steel, Teflon®, Delrin, UHMW

*Teflon® is a registered trademark of the Dupont Company.*

# Autoquip Standard Warranty

Autoquip Inc. warrants all equipment manufactured by Autoquip Inc. and bearing its name to be free from defects in material and workmanship on the date of sale by an authorized Autoquip Inc. distributor to the original purchaser for use. With the exception of any special, extended, or limited warranty published by Autoquip Inc., Autoquip Inc. will, for a period of twelve months from the date of sale, repair or replace any part of the equipment determined by Autoquip Inc. to be defective. This warranty applies only when the equipment is installed, operated, and maintained in accordance with Autoquip Inc.'s written recommendations.

This warranty does not cover, and Autoquip Inc. shall not be liable for general wear and tear, or any malfunction, damage, or wear and tear caused by faulty installation, misapplication, abrasion, corrosion, inadequate or improper maintenance, negligence, accident, tampering, or substitution of non-Autoquip Inc. component parts. Nor shall Autoquip Inc. be liable for malfunction, damage or wear caused by the incompatibility of Autoquip Inc. equipment with structures, accessories, equipment or materials not supplied by Autoquip Inc., or the improper design, manufacture, installation, operation or maintenance of structure, accessories, equipment or materials not supplied by Autoquip Inc.

This warranty is conditioned upon the prepaid return of the equipment claimed to be defective to an authorized Autoquip Inc. distributor for verification of the claimed defect. If the claimed defect is verified, Autoquip Inc. will repair or replace free of charge any defective parts. The equipment will be returned to the original purchaser transportation prepaid. If inspection of the equipment does not disclose any defect in material or workmanship, repairs will be made at a reasonable charge, which charges may include the costs of parts, labor, and transportation.

**THIS WARRANTY IS EXCLUSIVE, AND IS IN LIEU OF ANY OTHER WARRANTIES, EXPRESS OR IMPLIED, INCLUDING BUT NOT LIMITED TO WARRANTY OF MERCHANTABILITY OR WARRANTY OF FITNESS FOR A PARTICULAR PURPOSE.**

Autoquip Inc.'s sole obligation and buyer's sole remedy for any breach of warranty shall be set forth above. The buyer agrees that no other remedy (including, but not limited to incidental or consequential damages for lost profits, lost sales, injury to person or property, or any other incidental or consequential loss) shall be available. Any action for breach of warranty must be brought within two (2) years of the date of sale.

Autoquip Inc. makes no warranty, and disclaims all implied warranties of merchantability and fitness for a particular purpose in connection with accessories, equipment, material, or components sold but not manufactured by Autoquip Inc. These items sold, but not manufactured by Autoquip Inc. (such as electric motors, switches, hose, etc.) are subject to the warranty, if any, from their manufacturer. Autoquip Inc. will provide purchaser with reasonable assistance in making any claim for breach of these warranties.

In no event will Autoquip Inc. be liable for indirect, incidental, special or consequential damage resulting from Autoquip Inc. supplying equipment hereunder, or the furnishing, performance, or use of any products or other goods sold hereto, whether due to breach of contract, breach of warranty, the negligence of Autoquip Inc., or otherwise.

## **FOR AUTOQUIP, INC. CANADA CUSTOMERS**

The parties acknowledge that they required that the present document, as well as all documents, notices and legal proceedings entered into, given or instituted pursuant hereto or relating directly or indirectly hereto, be drawn up in English. Les parties reconnaissent avoir convenu que la rédaction du présent document sera en Anglais, ainsi que tous documents, avis et procédures judiciaires exécutés, donnés ou intentés à la suite de ou en rapport, directement ou indirectement, avec les procédures concernées.

## Autoquip Phone Numbers

**TO PLACE AN ORDER**, contact your Autoquip distributor, or call this number to identify the distributor closest to you :  
(262) 781-6133

*All written and visual data contained in this document reflects the latest product information available at the time of publication.  
Autoquip reserves the right to make changes at any time without notice.*

**Sales Offices :** MENOMONEE FALLS, WI (262) 781-6133

AUTOQUIP, INC. N57 W13430 REICHERT AVENUE MENOMONEE FALLS, WI 53051  
<http://www.aqautomation.com>